

# Southwest Texas State University



## REPORT

Facts and Figures from Institutional Research,  
an office under Institutional Effectiveness

### OFFICIAL SWT FAST FACTS Fall 2002

- Enrollment:
  - Undergraduate 21,089
  - Graduate 3,936
- Semester Credit Hours:
  - Lower-level 165,131
  - Upper-level 103,995
  - Graduate 22,255
- Full-Time First-Year Freshmen One-Year Retention Rate 77%
- Full-Time First-Year Freshmen Six-Year Graduation Rate 45%
- FY '02 Degrees Awarded 4,610
- Undergraduate Enrollment by College:
  - Applied Arts 2,159
  - Business 4,354
  - Education 2,987
  - Fine Arts 3,516
  - Health Prof. 921
  - Liberal Arts 3,287
  - Science 2,228
  - University College 1,637
- Graduate Enrollment by College:
  - Applied Arts 176
  - Business 388
  - Education 1,609
  - Fine Arts 179
  - Health Prof. 341
  - Liberal Arts 696
  - Science 547
- Enrollment by Ethnicity :
  - White 72%
  - Black 5%
  - Hispanic 18%
  - Other 5%

## Official Graduation and Retention Rates on the Rise at SWT

A Legislative Budget Board publication, Budget and Performance Assessments, reports SWT increased retention and graduation rates from 1997 to 2001. See the full report at <http://www.lbb.state.tx.us/Performance/Reporting/Documents.htm>.

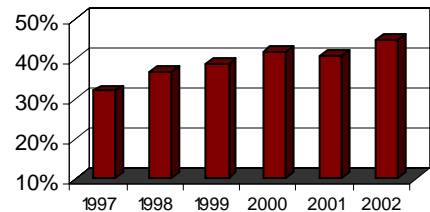
For first-time, full-time, degree-seeking freshmen, SWT demonstrated a six-year graduation rate increase of 9% from 1997 to 2001, (32% to 41%). This increase moved SWT's rank among Texas public institutions from the bottom half in 1997 to the top quartile in 2001.

In this same time period, SWT also experienced an 8% increase (66% to 74%) in the one-year retention rate of first-time, full-time, degree-seeking freshmen. SWT was ranked 5th among Texas public institutions in 2001, up from 8th in 1997.

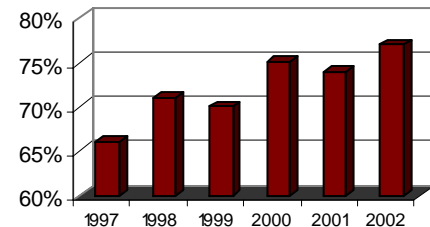
SWT continues to achieve higher retention and graduation rates. This is demonstrated by the increase in SWT's 2002 graduation and retention rates, 45% and 77% respectively.

SWT's continuous improvement in academic performance is moving SWT to the upper ranks among Texas institutions. As academic performance improves, so will SWT's academic reputation.

SWT Six-Year Graduation Rates



SWT One-Year Retention Rates



## IR on the Web

Over the last three years, the IR Office has made data available via the web. Currently information is available through the on-line fact book, on-line query, pivot tables, IPEDS, and THECB Prep system. These services allow users to gather data about SWT and higher education. These web tools are available at <http://www.swt.edu/ir/ir.htm>.

Additionally, the IR Office regularly presents *Where are the Data?*, a training session on data collection via the web. The presentation is available on-line at <http://www.swt.edu/ir/irnew.htm> and offered through Faculty Advancement and Professional Development.



Institutional Research  
JC Kellam Building  
Room 883  
Phone: 512-245-2386  
Fax: 512-245-8446  
Email: tr05@swt.edu  
<http://www.swt.edu/ir/ir.htm>



## IR Projects

### Recently Completed Projects

- SAIR Conference in Baton Rouge (Joe Meyer, Bruce Lockhart, and Richard Batey presented a paper on web developments in Institutional Research)
- LBB Annual Performance Measures Annual Reporting
- BOR Fact Sheet  
<http://www.swt.edu/ir/BOR02/BORIndex.htm>
- Fall CBM reporting (Funding Cycle)
- Fall 2002 Fact Book  
<http://www.irp.swt.edu/fb/irfactbook.htm>
- Transfer Advisory Council
- Student Outcomes Tables
- High School and Transfer Feedback Reports

- CUPA Faculty Salary Survey

### Up-Coming Projects

- AAUP Faculty Salary Survey
- IPEDS Reporting
- Instructional Course Load Matrix (ICLM)
- Fall 2002 Room and Board Survey
- STATS (Fall 2002 Mini Fact Book)
- SWT and Its Comparables
- Outcomes and Mentoring Tables

For more information about any of these projects, contact IR at 245-2386. To request an ad hoc project, please use our project request form at <http://www.swt.edu/ir/cgi/ir.pl>.

This is a publication of:  
The Office of Institutional Research

Editor: Tami Reeves, Research Analyst  
Contributors: Joe Meyer, Director;  
Bruce Lockhart, Research Analyst;  
Richard Batey, Research Analyst;  
Lesley Prewitt, Administrative Assistant II

Southwest Texas State University is a member of the Texas State University System



Southwest Texas State University  
**Institutional Effectiveness**

*Dedicated to the Advancement  
of University Excellence*